



## User Safety Notice

Altair® 5X PID

August, 2023

PLEASE READ NOW AND TAKE ACTION

**MSA Corporate Center**  
1000 Cranberry Woods Drive  
Cranberry Township, PA 16066  
800.MSA.2222  
www.MSAafety.com

**Dear MSA Customer,**

MSA is issuing this User Safety Notice to inform you of a procedural update regarding usage of the Altair 5X PID gas detector.

MSA has determined that PID sensors manufactured from March 2020 to and including June 2023 may not respond to gas after being turned on due to the lamp of the sensor not lighting upon startup and the Altair 5X PID will not display a PID lamp error. **To verify proper operation of the Altair 5X PID, perform a bump test or manual gas check each time the unit is turned on prior to using the device.**

**MSA has not received any reports of injuries due to this condition. However, it is necessary that you perform the actions outlined in this notice.**

To verify proper device operation, PID sensors manufactured from March 2020 to and including June 2023 must have a bump test or manual gas check performed each time that the unit is powered on, prior to use. This requirement is in addition to existing usage guidelines.

To reduce the number of bump tests required during daily usage, you may leave your Altair device operating continuously in between uses. Manual gas checks may be performed as a substitute for the bump test if it is not convenient to perform a bump test, for example if a Galaxy GX2 Automated Test System is not nearby. The manual gas check procedure is detailed in Appendix A of this notice.

The [Altair 5X PID Instruction Manual](#) has been updated to Revision 08 reflect these changes.

### **Affected Date Range**

PID sensors manufactured from March 2020 to and including June 2023 are affected and must be used in accordance with this updated guidance.

PID sensors manufactured prior to March 2020 are not affected and may continue to be used without any procedural changes.

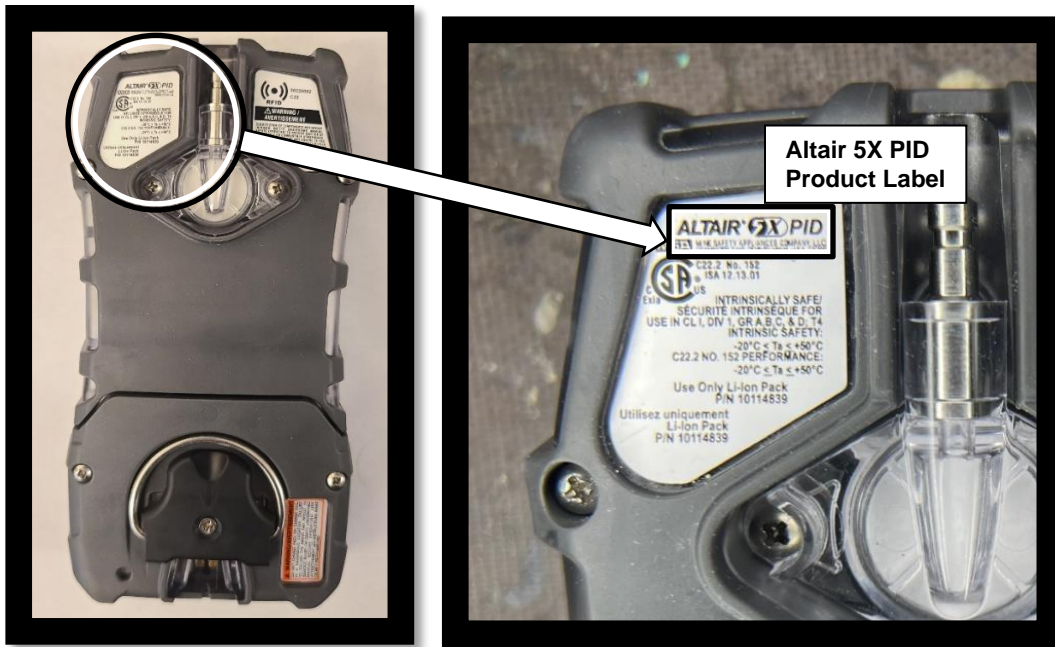
Instructions to identify your product and date of manufacture are included in this notice.

**MSA is advising Altair 5X PID customers with PID sensors manufactured from March 2020 to and including June 2023 to perform a bump test or manual gas check each time the unit is turned on prior to using the device.**

**Identifying Potentially Affected Product**

1. Reference the product label found on the back of the housing (Figure 1)
  - a. If the label states Altair 5X PID, proceed to step 2
  - b. If the label does not state Altair 5X PID, the product is not affected, and no action is needed.

**MSA Corporate Center**  
1000 Cranberry Woods Drive  
Cranberry Township, PA 16066  
800.MSA.2222  
www.MSAafety.com



**Figure 1 – Altair 5X PID Product Label**

2. To find the date code for the Altair 5X PID, reference the date code on the back of the unit. (Figure 2)

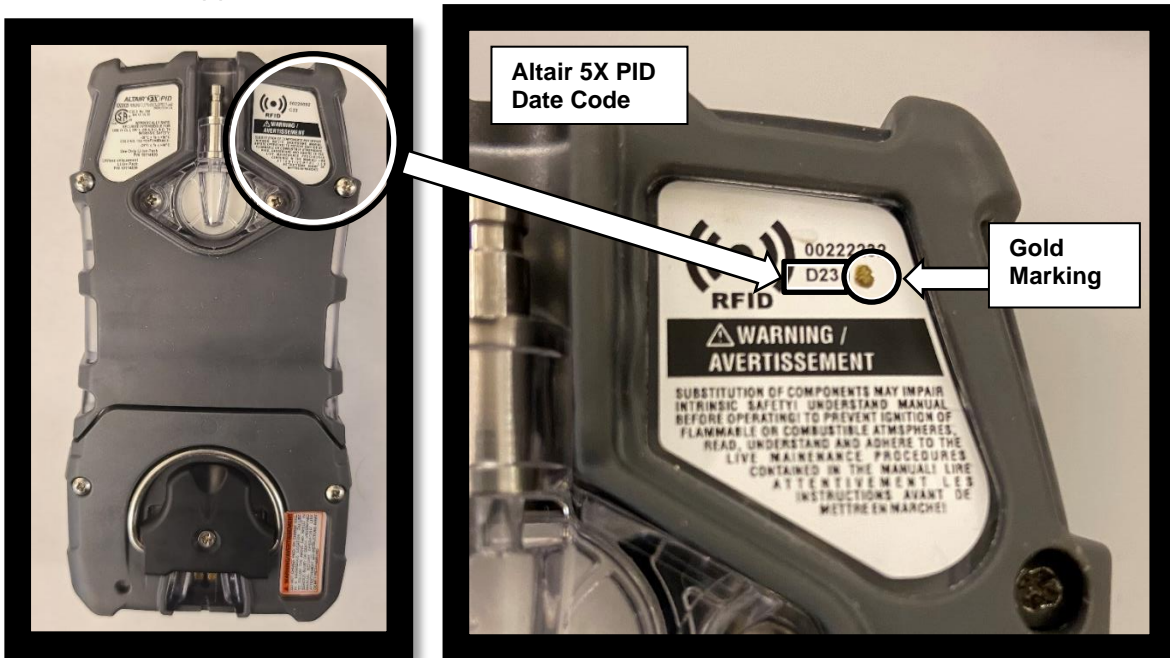
1st digit indicates month of manufacture (A = January, B = February, etc.).  
2nd and 3rd digits indicate year of manufacture (22 = 2022, 23 = 2023, etc.).

- a. If your Altair device has a gold marking as shown in Figure 2, the product is not affected, and no action is needed.
- b. If the Altair device was manufactured from March 2020 to and including June 2023, your PID sensor is affected.
  - i. Follow the updated guidance outlined in this notice.
- c. If the Altair device was manufactured prior to March 2020 or after June 2023, proceed to step 3.

**MSA Corporate Center**  
1000 Cranberry Woods Drive  
Cranberry Township, PA 16066  
800.MSA.2222  
www.MSAafety.com

(Example C20 = March 2020 → Affected, B19 = February 2019 → Proceed to step 3)

Note: See Appendix B for a full list of affected date codes.



**Figure 2 – Altair 5X PID Date Code Identification**

**⚠ WARNING!**

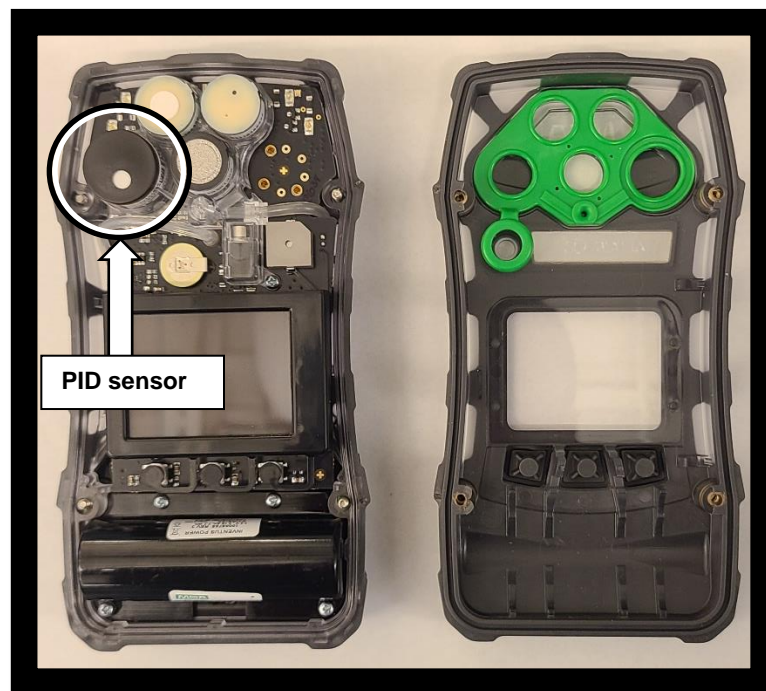
Perform the following steps in a non-hazardous area. If the following steps are performed in a hazardous area, it could result in an explosion.

**Failure to follow this warning can result in serious personal injury or death.**

**MSA Corporate Center**  
1000 Cranberry Woods Drive  
Cranberry Township, PA 16066  
800.MSA.2222  
www.MSAafety.com

3. Turn the device OFF and remove the battery per section 6.3 (Replacing the Battery) of the Altair 5X PID Instruction Manual.

Remove the PID Sensor (Figure 3) per section 6.4 (Maintenance Procedure – Replacing or Adding a Sensor) of the Altair 5X PID Instruction Manual.



**Figure 3 – Accessing the PID Sensor**

4. To find the date code for the PID sensor, reference the 2<sup>nd</sup>, 3<sup>rd</sup>, and 4<sup>th</sup> digits of the serial number of the PID sensor on the side of the sensor. (Figure 4)

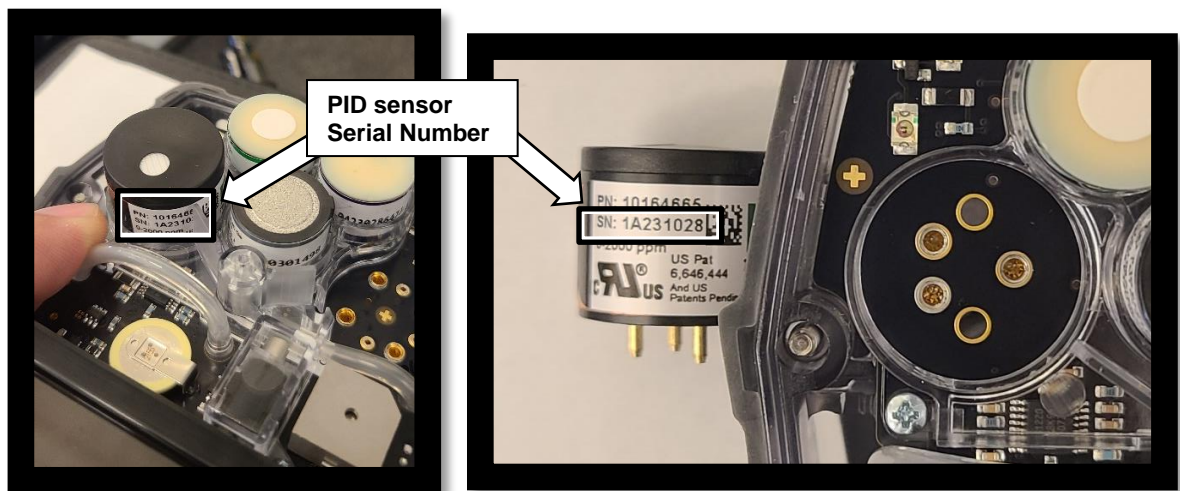
2<sup>nd</sup> digit indicates month of manufacture (A = January, B = February, etc.).

3<sup>rd</sup> and 4<sup>th</sup> digits indicate year of manufacture (22 = 2022, 23 = 2023, etc.).

- d. If the sensor was manufactured prior to March 2020, your PID sensor is not affected.
  - i. No procedural changes are needed.
- e. If the sensor was manufactured during March 2020 to and including June 2023, your PID sensor is affected.
  - i. Follow the updated bump test guidance outlined in this notice.

(Example xC20xxxx = March 2020 → Affected, xB19xxxx = February 2019 → Not Affected)

Note: See Appendix B for a full list of affected date codes.



**Figure 4: PID Sensor Serial Number Identification**

5. Re-install the PID sensor and battery per section 6.4 (Maintenance Procedure – Replacing or Adding a Sensor) of the Altair 5X PID Instruction Manual.
6. Perform bump tests or manual gas checks on all affected units each time the Altair 5X PID device is turned on, prior to use.



## **MSA Customer Service Contact Information**

If you have any questions regarding this User Safety Notice please contact MSA as shown below:

### **US and Canada:**

call 866-672-0005 or

Email us at [ProductSafetyNotices@msasafety.com](mailto:ProductSafetyNotices@msasafety.com)

### **Europe, Middle East, and Africa:**

Email us at [ProductUserNotice@msasafety.com](mailto:ProductUserNotice@msasafety.com) or contact your local MSA customer service representative

### **China:**

Email us at [info.cn@msasafety.com](mailto:info.cn@msasafety.com) or contact your local MSA customer service representative

### **All other regions:**

Contact your local MSA customer service representative.

We apologize for any inconveniences that this may cause; however, your safety and continued satisfaction with our products is important to us.

Issued by: Adam Troup  
Product Safety Manager

**MSA Corporate Center**  
1000 Cranberry Woods Drive  
Cranberry Township, PA 16066  
800.MSA.2222  
[www.MSAsafety.com](http://www.MSAsafety.com)





## Appendix A – Manual Gas Check Procedure

Manual Gas Check included in section 5.13 of Altair 5X PID Instruction Manual Rev08

**MSA Corporate Center**  
 1000 Cranberry Woods Drive  
 Cranberry Township, PA 16066  
 800.MSA.2222  
 www.MSAafety.com

### Equipment

See accessory chapter of Altair 5X PID Instruction Manual for ordering information.

1. 100 ppm Isobutylene cylinder
2. Demand flow regulator
3. Calibration tubing

### Performing the Manual Gas Check

note: Use 100ppm Isobutylene balanced in air

1. While the device is turned ON in a clean, fresh air environment, verify that readings indicate no gas is present.
2. Attach the demand regulator to the isobutylene cylinder.
3. Connect tubing to the regulator
4. Attach the other end of tubing to the device pump inlet.
5. Allow unit to run for 30 seconds
6. Observe reading on device display
  - a. If a response is observed, the PID sensor has passed the gas check. Disconnect cylinder and begin normal operation.
  - b. If no response is observed, calibrate the device as described in section 5.10 of the manual.

## Appendix B – List of Affected Date Codes

	2020	2021	2022	2023
January		A21	A22	A23
February		B21	B22	B23
March	C20	C21	C22	C23
April	D20	D21	D22	D23
May	E20	E21	E22	E23
June	F20	F21	F22	F23
July	G20	G21	G22	
August	H20	H21	H22	
September	I20	I21	I22	
October	J20	J21	J22	
November	K20	K21	K22	
December	L20	L21	L22	